

### General Site Notes

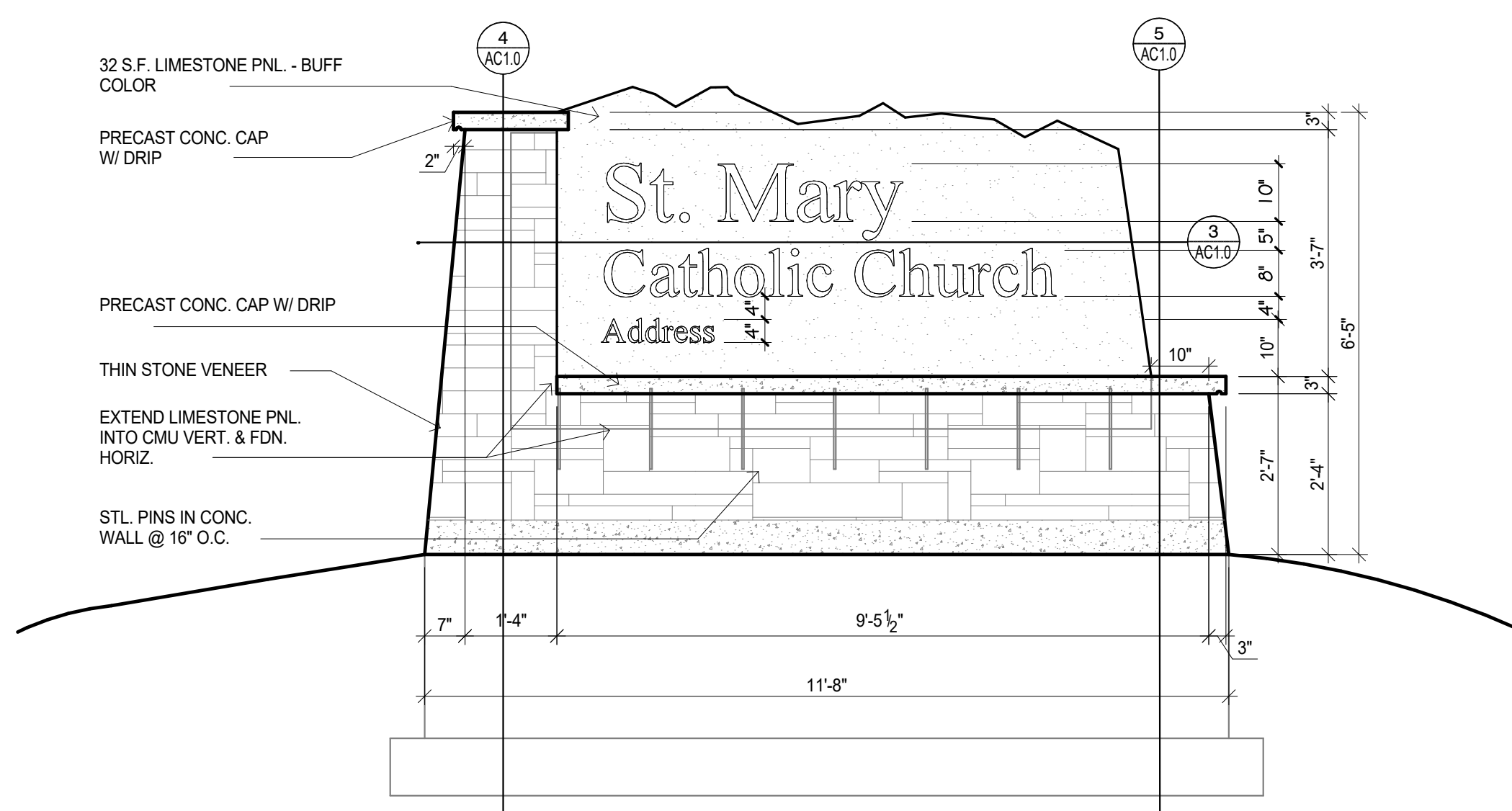
- The Contractor shall repair or replace any site features damaged during construction including, but not limited to the irrigation system, landscaping, sidewalks, concrete curbs and gutters, asphalt pavement, signage, and striping.
- The Contractor shall replace all damaged asphalt pavement with new asphalt pavement to match the same depth as the existing that was disturbed.
- The Contractor shall replace all damaged concrete pavement with new 4000 PSI concrete pavement to match existing depths and profiles.
- The Contractor shall keep the parking lot, vehicular drive lanes, on-site sidewalks, and all other site access points clear of stored materials and construction debris at all times during construction in order to provide the Owner continued access to the site.
- The Contractor shall coordinate and schedule all construction activities occurring on the site with the Owner to avoid disruption of the Owner's activities.
- The Contractor shall coordinate and implement all safety measures requested and/or required by the local Fire Marshal, Health Department, Building Officials, and other authorities having jurisdiction on the project.
- The existing utilities are to remain in service and protected against damage during demolition activities. The Contractor shall notify the Owner at least forty-eight hours in advance of any interruptions to utilities.
- The Contractor shall not obstruct any accesses designated for emergency vehicles and shall provide temporary accesses as required.
- The Contractor shall provide barricades, safety warning signs, fences, and other temporary items to maintain the safety of the construction site.
- The Contractor shall comply with all ordinances affecting the project including but not limited to hours of work, safety, noise pollution, and dust mitigation.
- The Contractor shall review the existing conditions and the Geotechnical Report prepared for the project. Failure to do so shall not eliminate the Contractor's responsibility to perform the recommendations of the Geotechnical Report.
- The Contractor shall maintain adequate drainage throughout the site during the construction of the project. The final grade shall be maintained in a condition that appropriately always drains.
- The Contractor shall keep all adjacent streets and parking areas clear of mud and debris. The Contractor shall remove all mud and debris at the end of each day.
- The Contractor shall provide control joints in concrete sidewalks at 5'-0" O.C. and expansion joints at 90'-0" O.C. (maximum), unless noted otherwise.
- The Contractor shall be responsible for contacting all subsurface utility owners prior to beginning work to verify the location of existing underground utility lines before proceeding with any excavation work.
- The Contractor shall review the Civil, Structural, Mechanical, Electrical, and all other related drawings and documents for additional requirements. No extras will be allowed for work shown in any part of these drawings or described in any part of the Project Manual.

### Keynote Legend - Site Plans

- S.1 (N) ASPHALT PAVING - RE: CIVIL
- S.2 (N) CONCRETE WALK - RE: CIVIL & LANDSCAPE
- S.3 (N) ASPHALT MILLINGS PARKING LOT - RE: CIVIL
- S.4 (N) CRUSHER FINES, RE: CIVIL
- S.5 (N) TURF FIELD, RE: LANDSCAPE
- S.6 (N) BEAR-PROOF TRASH CANS, PROVIDE CONC. SLAB - RE: CIVIL AND LANDSCAPE
- S.7 (N) BOULDER RETAINING WALL - RE: CIVIL
- S.9 (N) MONUMENTAL SIGN
- S.10 (N) CURB AND GUTTER - RE: CIVIL
- S.11 (N) PLANTING BEDS - RE: CIVIL & LANDSCAPE
- S.12 (N) PARKING & CROSSWALK STRIPING - RE: CIVIL
- S.13 (N) BENCH SEATING, EXTEND CONC. WALK BELOW, TYP. - RE: LANDSCAPE

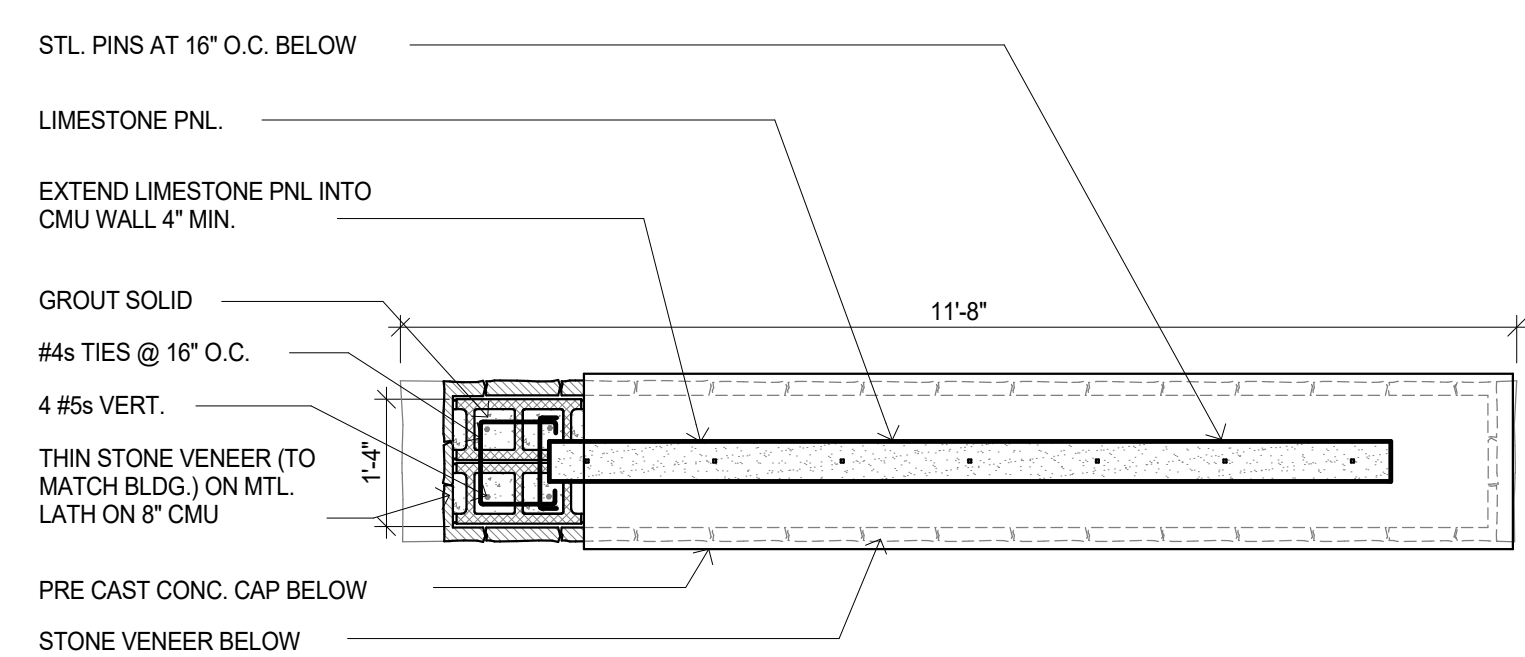
### 1. Site Plan

1" = 40'-0"



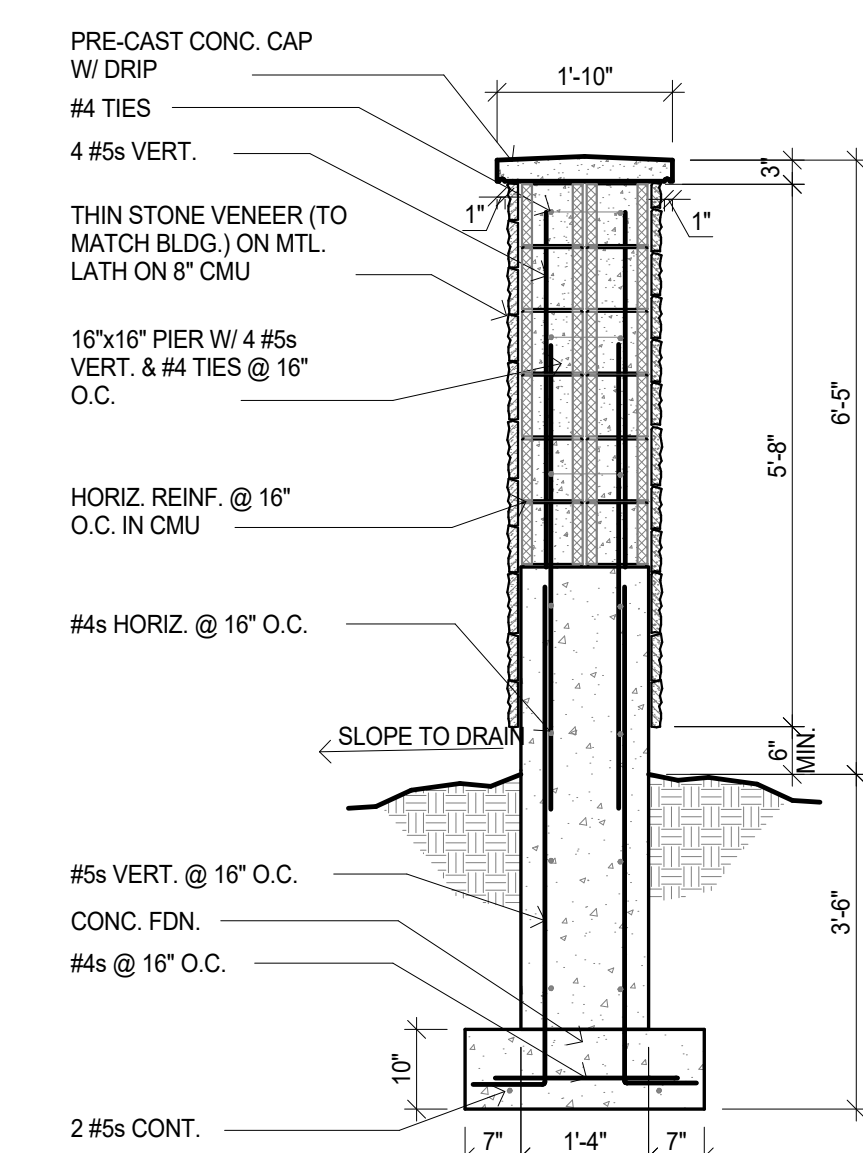
### 2. Facility Sign Elevation

1/2" = 1'-0"



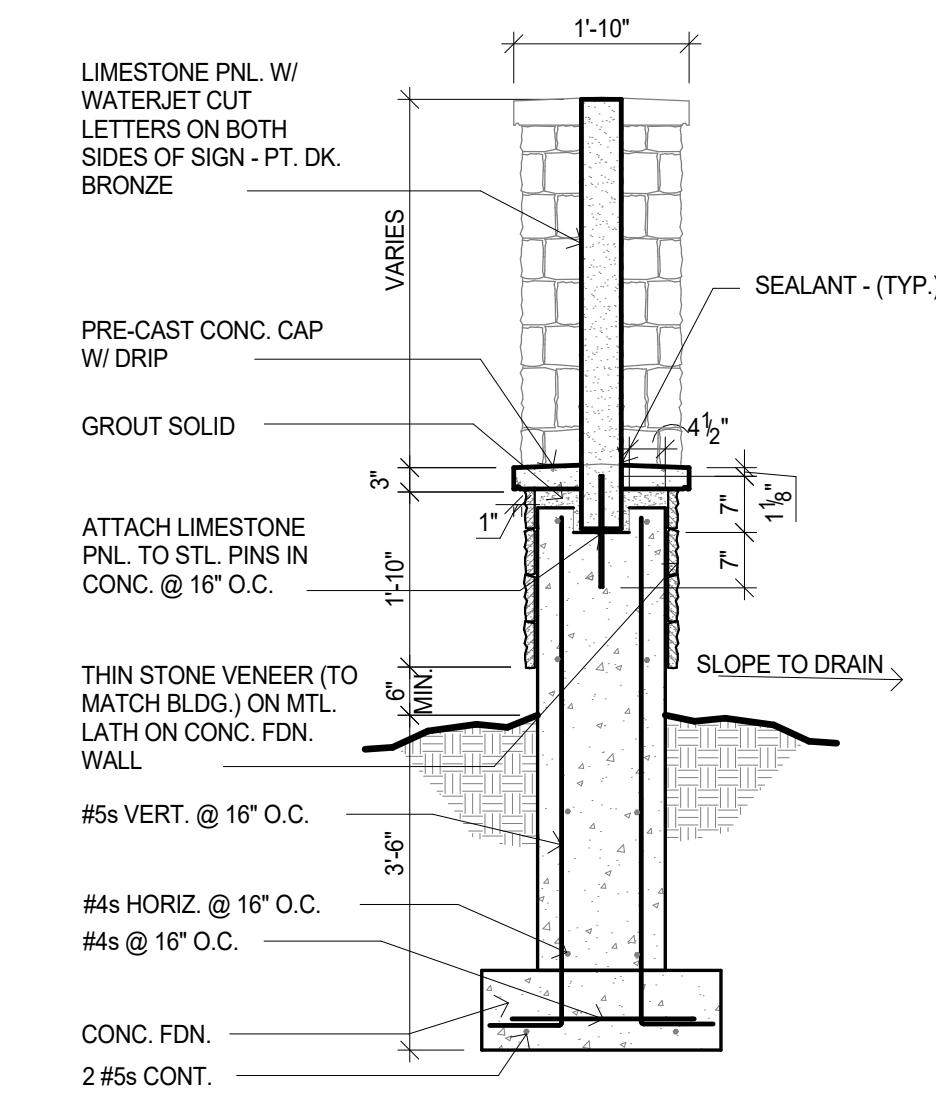
### 3. Facility Sign Section 1

1/2" = 1'-0"



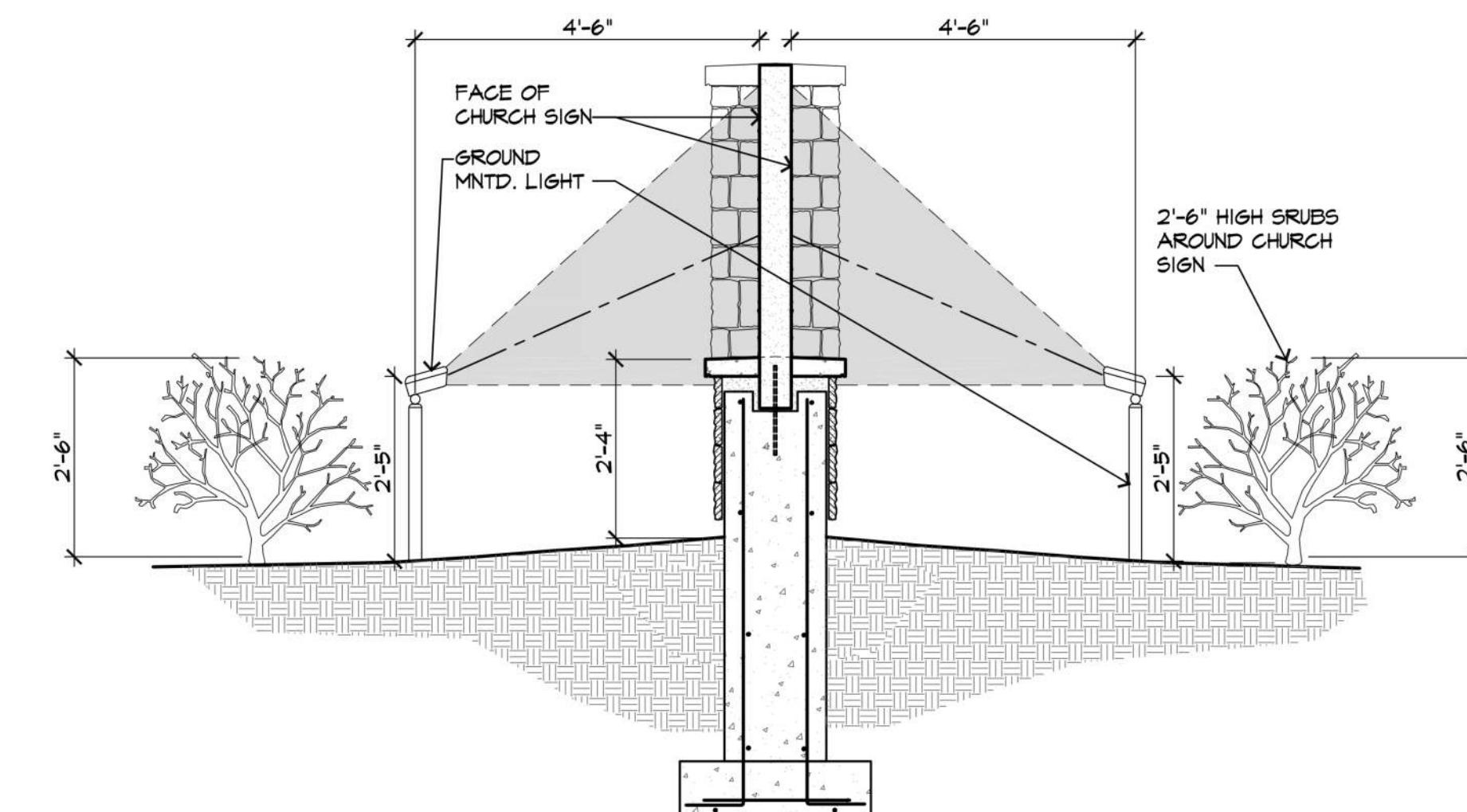
### 4. Facility Sign Section 2

1/2" = 1'-0"



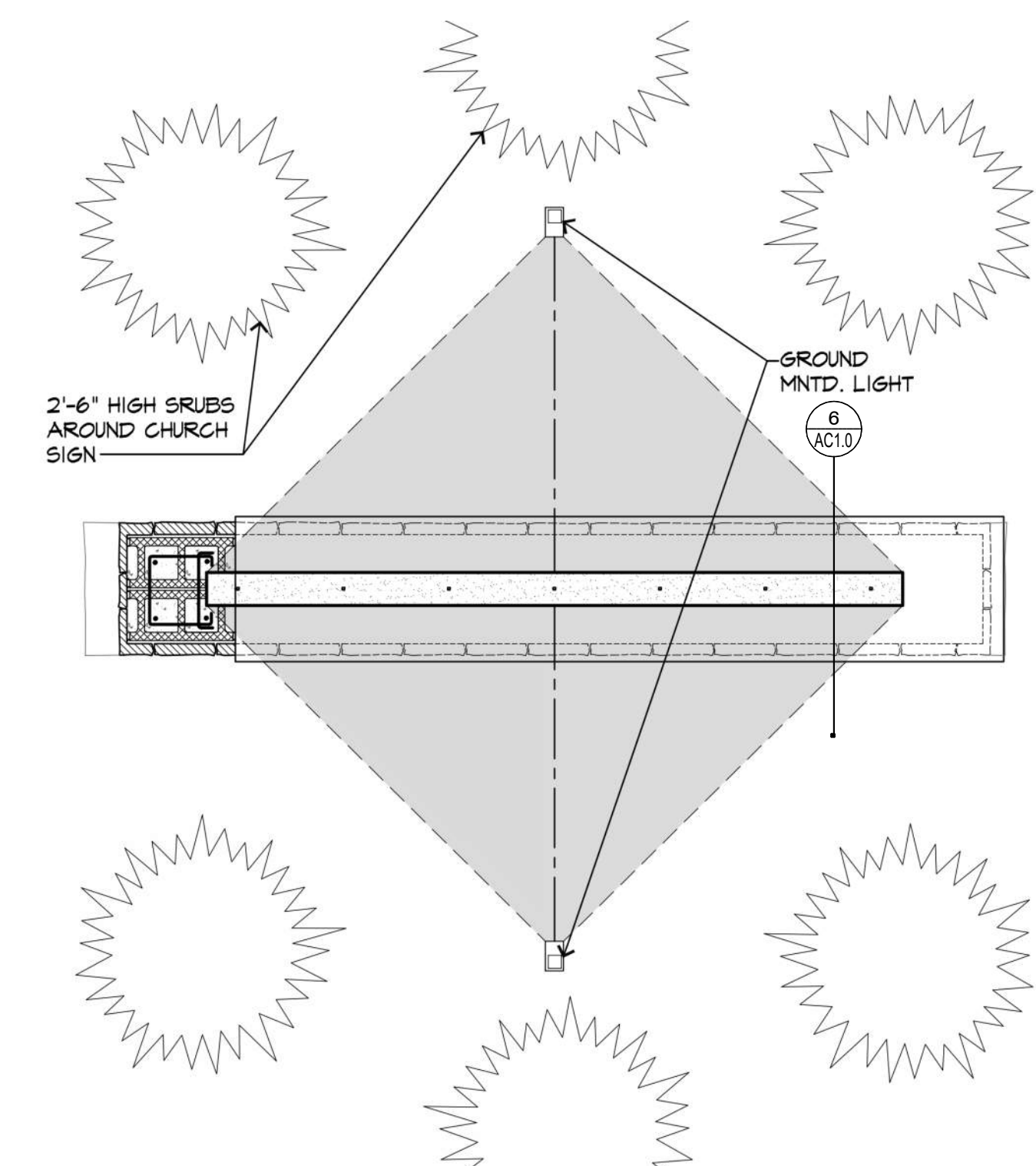
### 5. Facility Sign Section 3

1/2" = 1'-0"



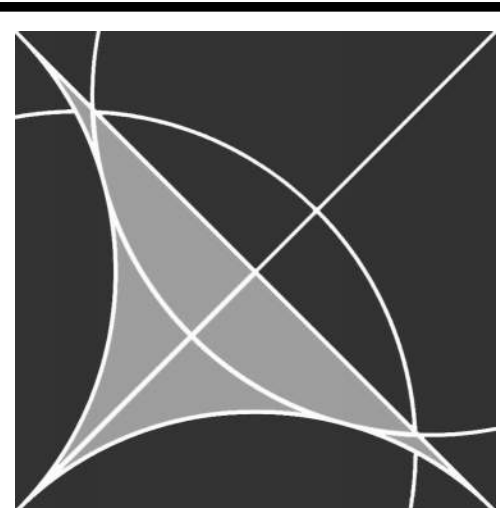
### 6. Facility Sign Detail

1/2" = 1'-0"



### 7. Facility Sign Plan Detail

1/2" = 1'-0"



**Eidos**  
ARCHITECTS

5400 Greenwood Plaza Blvd.  
Greenwood Village, CO 80111  
Phone: 720-200-0630

© 2026

Consultants:



Project Title:

**New Church & Parish Hall**

**St. Mary Catholic Parish**

Gypsum, Colorado

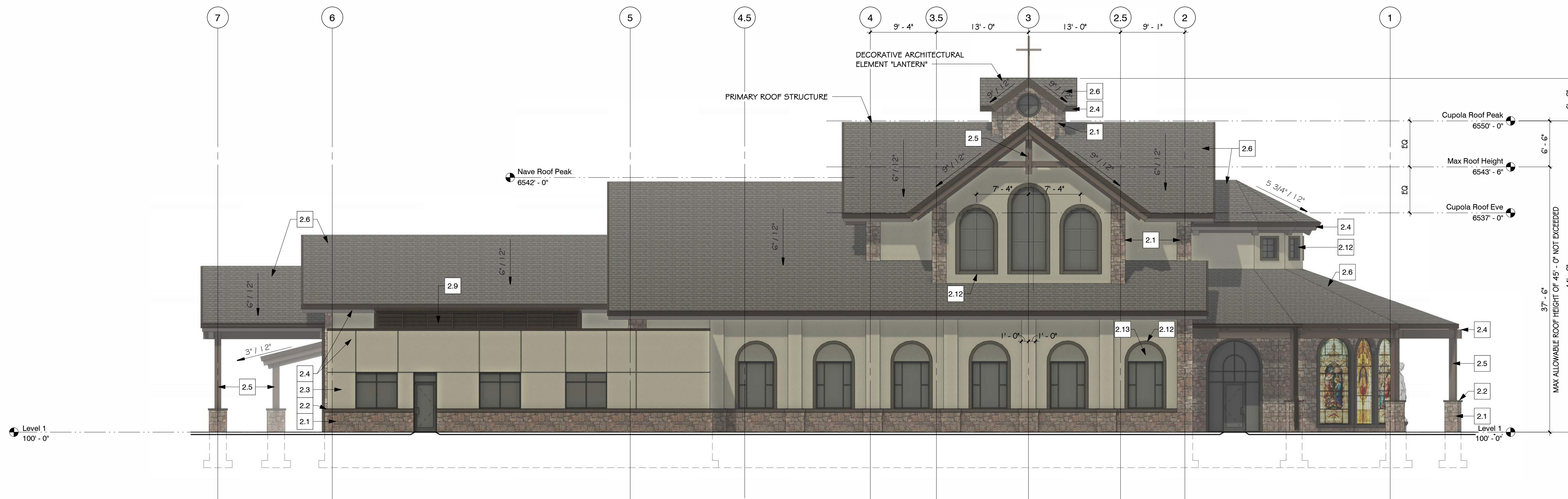
Mark	Date	100% DDs	Description
	02.27.26		

Project Number: 25019  
Drawn By: PB, CM  
Checked By: JR

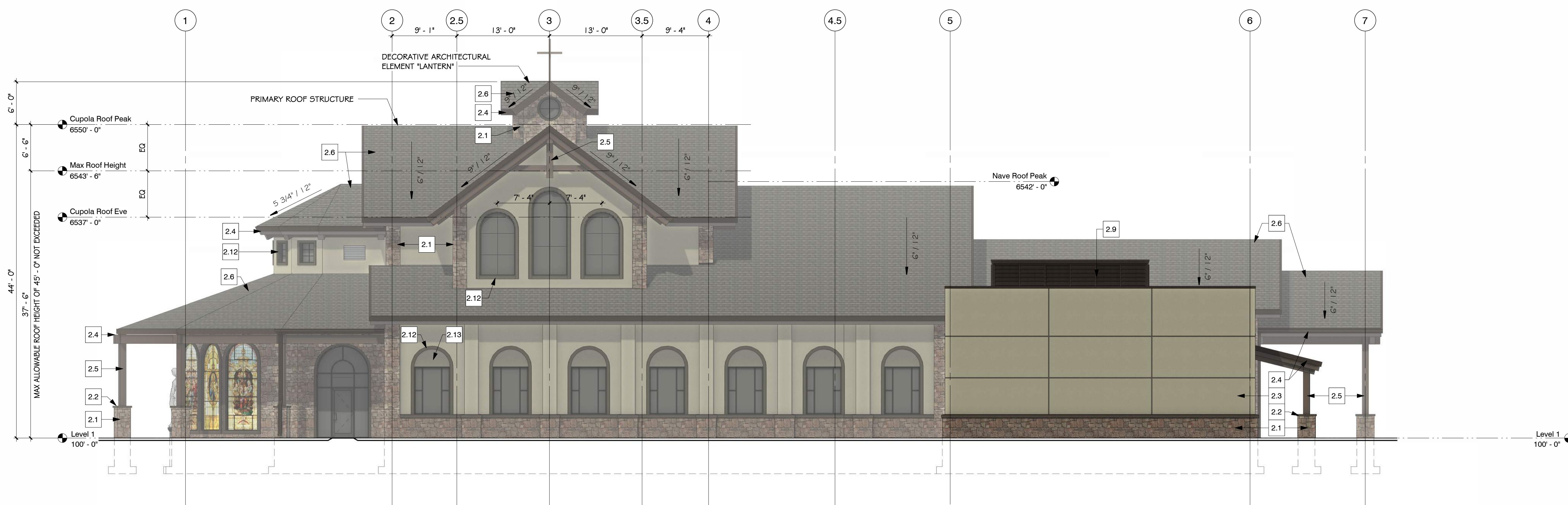
Sheet Title:

Site Plan & Details

**AC1.0**



1. North Elevation - Base Bid Color  
1/8" = 1'-0"



2. South Elevation - Base Bid Color  
1/8" = 1'-0"

Keynote Legend - Elevations	
2.1	STONE VENEER - LEDGESTONE PATTERN
2.2	STONE WAINSCOT CAP
2.3	FIELD STUCCO - (COLOR 1)
2.4	METAL TRIM - DARK BRONZE
2.5	WOOD STRUCTURE - DARK OAK
2.6	ASPHALT SHINGLES
2.7	STEEL TUBE STRUCTURE - DARK BRONZE
2.8	PARAFET CAP
2.9	PREFABRICATED ROOF SCREENS
2.10	MTL. GLITTER AND DOWNSPOUTS - DARK BRONZE
2.11	MECH. UNIT, PT. TO MATCH MECH. SCREEN, TYP. - REI MECH.
2.12	STUCCO ACCENT TRIM - (COLOR 2)
2.13	STUCCO ACCENT - (COLOR 3)



ASPHALT SHINGLE (2.6)



DARK OAK (2.5)      DARK BRONZE (2.4)



STUCCO - COLOR 1 (2.3)



STUCCO - COLOR 2 (2.12)



STUCCO - COLOR 3 (2.13)



STONE VENEER (2.1)

5400 Greenwood Plaza Blvd.  
Greenwood Village, CO 80111  
Phone: 720-200-0630

© 2026

Consultants:

**NOT FOR CONSTRUCTION**  
3/26/2026 4:28:30 PM

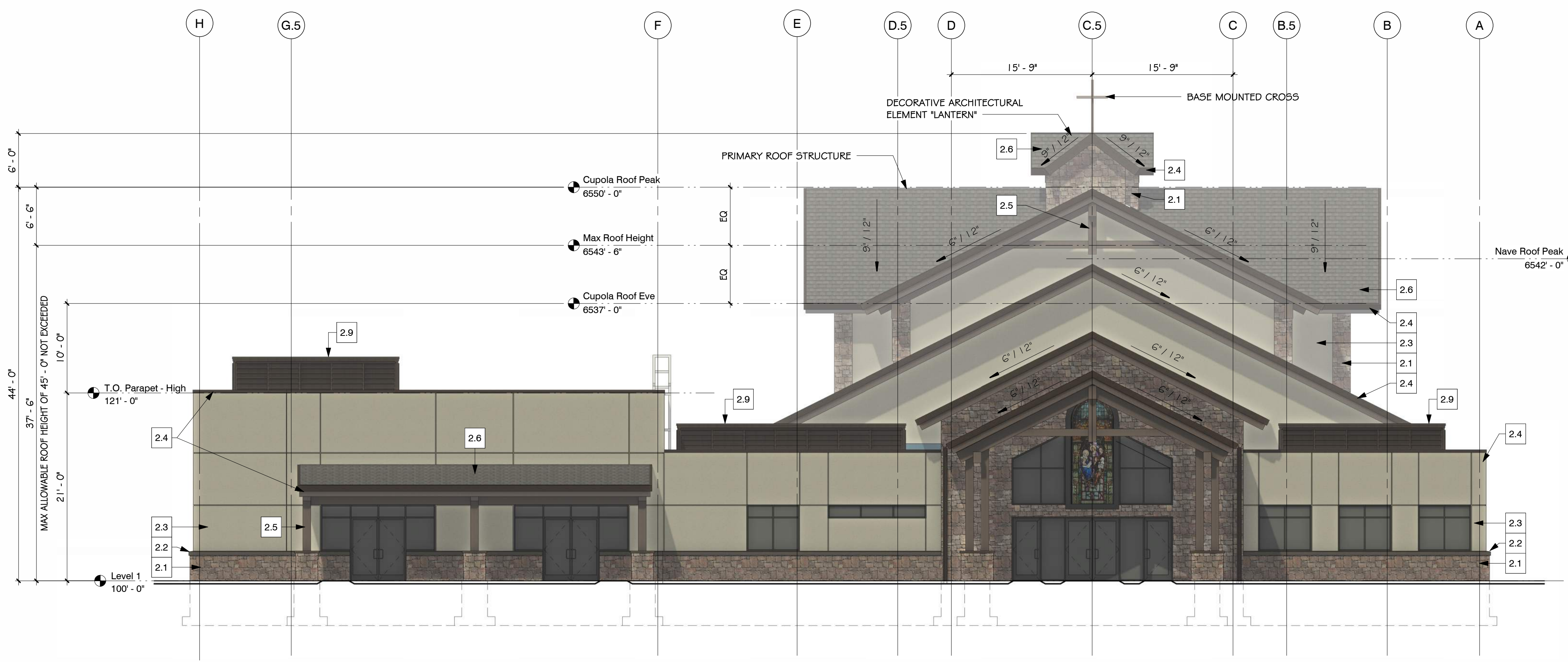
Project Title:  
**New Church & Parish Hall**  
**St. Mary Catholic Parish**  
Gypsum, Colorado

Mark	Date	Description

Project Number: 25019  
 Drawn By: Author  
 Checked By: Checker

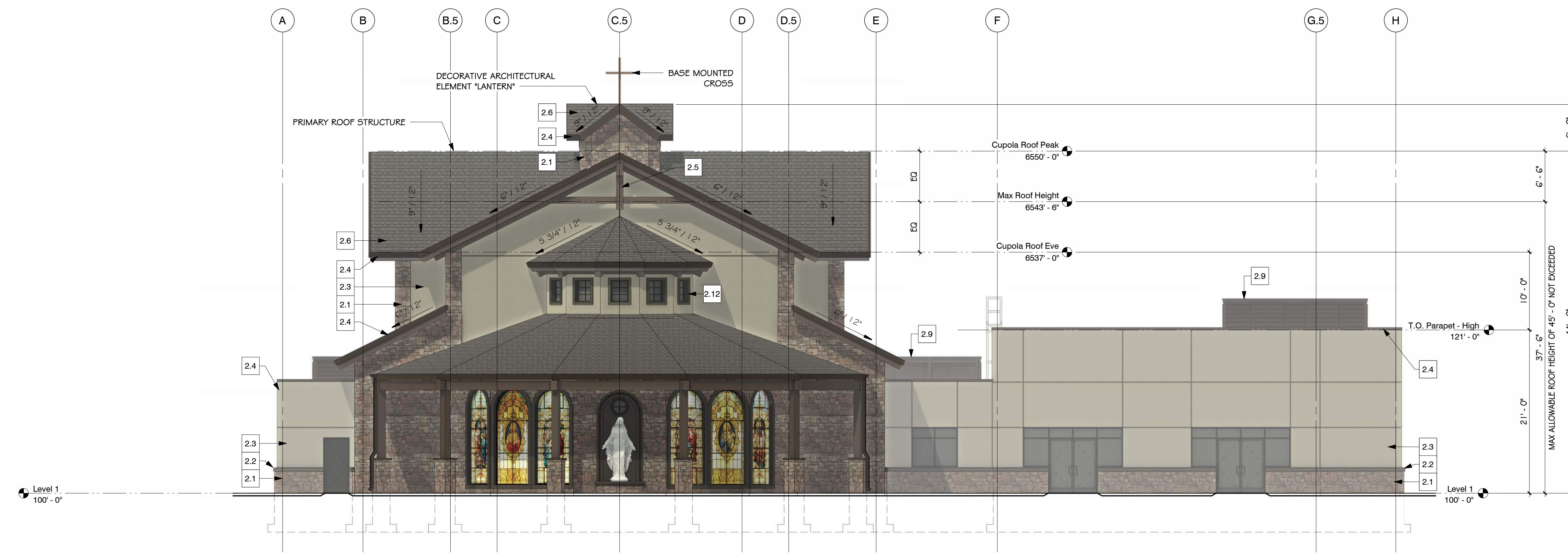
Sheet Title:  
Exterior Elevations -  
Base Bid N/S Color

**A2.3**



1. East Elevation - Base Bid Color

1/8" = 1'-0"



2. West Elevation - Base Bid Color

1/8" = 1'-0"

**Keystone Legend - Elevations**

- 2.1 STONE VENEER - LEDGESTONE PATTERN
- 2.2 STONE WAINSCOT CAP
- 2.3 FIELD STUCCO - (COLOR 1)
- 2.4 METAL TRIM - DARK BRONZE
- 2.5 WOOD STRUCTURE - DARK OAK
- 2.6 ASPHALT SHINGLES
- 2.7 STEEL TUBE STRUCTURE - DARK BRONZE
- 2.8 PARAPET CAP
- 2.9 PREFABRICATED ROOF SCREENS
- 2.10 MTL. GUTTER AND DOWNSPOUTS - DARK BRONZE
- 2.11 MECH. UNIT, PT. TO MATCH MECH. SCREEN, TYP. - REI MECH.
- 2.12 STUCCO ACCENT TRIM - (COLOR 2)
- 2.13 STUCCO ACCENT - (COLOR 3)



ASPHALT SHINGLE (2.6)



DARK OAK (2.5)      DARK BRONZE (2.4)



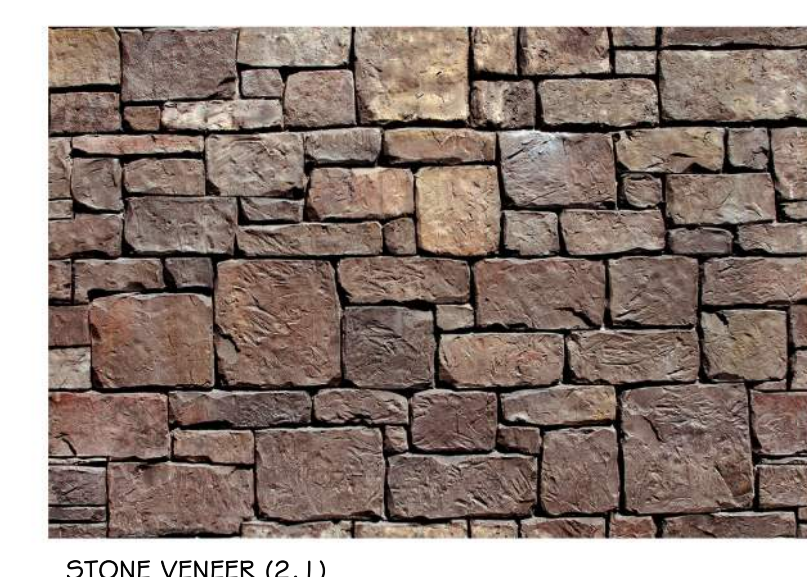
STUCCO - COLOR 1 (2.3)



STUCCO - COLOR 2 (2.12)



STUCCO - COLOR 3 (2.13)



STONE VENEER (2.1)

**Eidos**  
ARCHITECTS

5400 Greenwood Plaza Blvd.  
Greenwood Village, CO 80111  
Phone: 720-200-0630

© 2026

Consultants:

**NOT FOR CONSTRUCTION**  
3/26/2026 4:37:21 PM

Project Title:  
**New Church & Parish Hall**  
**St. Mary Catholic Parish**  
Gypsum, Colorado

Mark	Date	Description

Project Number: 25019  
 Drawn By: Author  
 Checked By: Checker

Sheet Title:  
Exterior Elevations -  
Base Bid E/W Color

**A2.4**



Exterior Perspective - Main Entry



Exterior Perspective - Chapel Entry



Exterior Perspective - Main Entry Plaza



Exterior Perspective - Aerial View



Exterior Perspective - Aerial View

**Eidos**  
ARCHITECTS

5400 Greenwood Plaza Blvd.  
Greenwood Village, CO 80111  
Phone: 720-200-0630

© 2026

Consultants:

**NOT FOR CONSTRUCTION**  
3/26/2026 8:59:10 PM

Project Title:  
**New Church & Parish Hall**  
**St. Mary Catholic Parish**  
Gypsum, Colorado

Mark	Date	Description

Project Number: 25019  
 Drawn By: Author  
 Checked By: Checker

Sheet Title:  
Exterior Renderings

**A2.6**

C:\Users\cmoney\Documents\25019 St. Mary A2.6\_CMoney@eidosarch.com.rvt  
 3/26/2026 8:59:16 PM  
 0" 1/2" 1" 2" 4"